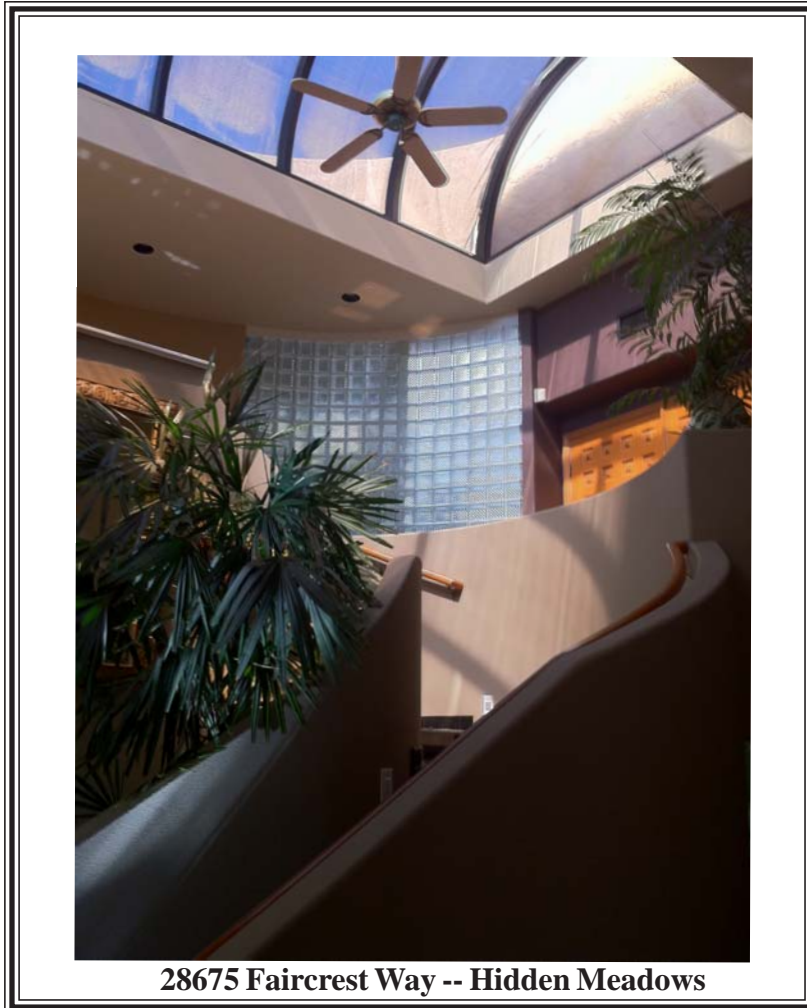
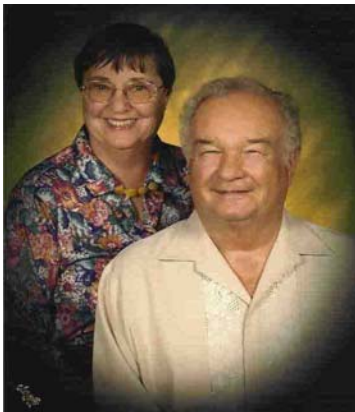


# Simply: The Finest of Everything

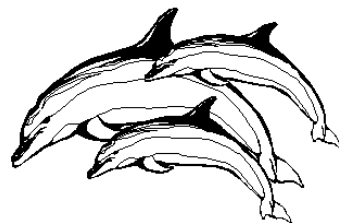


**\$749,900**

If a Buyer is looking for an exotic architectural design that is unique without being “over the top,” this could be “it.” Set on 1.39 acres of gentle slope, with views, this 5,000+ s.f. home is an artists delight. Light is everywhere, and the entire home and property are fully fenced, and electrically gated – mostly with six-foot wrought-iron fence. Enter the hillside home on the top floor – over a 70+ foot Cedar bridge and step on the first of more than 1,500 square feet of 3/8 inch granite floors, with a 20 foot Loggia of dual-pane Plexiglass (with 80% shade cloth) above and two stories of visible public rooms below. Eight leisurely minutes to the freeway. Details on reverse side.



[www.allenhemphill.com](http://www.allenhemphill.com)



DRE License #: 00553066

**Dolphin Realty**

15817 Bernardo Center Dr. #111

San Diego 92127

760.749.5005 (Office)

760.749.5725 (FAX)

[allen@allenhemphill.com](mailto:allen@allenhemphill.com)

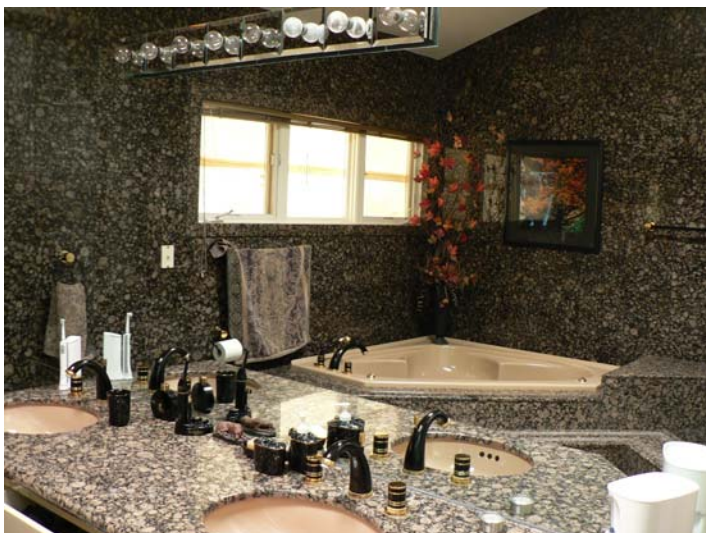
Please Call Allen Polk Hemphill (Meadows Resident) at 760-749-2654 (24/7 number)



## For Discriminating Buyers!

### This beautiful home includes:

- Hardiplank exterior on areas of the walls which get afternoon sun. All of outside has been freshly painted
- 23 feet Loggia, dual-pane plexiglass (with 80% shade cloth) in Home Entry
- New exterior deck with 70 feet of tempered glass windbreak
- Dual-Zoned heating and A/C. Primary unit is only four years old. Tile roof is four years old
- Maid or in-law quarters with outside and inside entry. Refrig & sink, large bath/shower, living room and patio
- Complete Sports bar seating for 10; Low-e, Four Season extension seating, electronic liquor dispenser
- The bar cabinetry: Canadian Birds Eye Maple; Kitchen: SieMatic, German custom-built, straight grained Fir
- The bar itself is more than 13 feet of Amadeus Granite slab, three feet wide, seating at least seven people
- Separate Bridge leads from the Living Room to an 11x11, second-story Gazebo
- Fire sprinklers throughout. New whole-house vacuum system
- More than 1,500 s.f. of 3/8" granite floors, all set without grout
- Refrigerator is SubZero; the dishwasher is Miele; oven, warming oven and cooking top are Dacor
- Impressively large and exquisite granite Master Bath with gold-plated bath fixtures
- Oversize walk-in closet in the the Master Suite with separate sections for Spouses
- 24-carat gold plated Kohler bath fixtures & gold plated custom bath tiles in main Guest Bath
- Professional, 20x40, climate-controlled greenhouses & 30x40 shadehouse available for separate purchase
- Landscaped in South African and Australian exotic and valuable plants
- All hardware is solid brass Baldwin
- 190 palms, 5 tall canary palms, exotic tree aloes, cycads, cactus garden. All are on a master 24 station sprinkler/drip system



*Master Bath*



*Breakfast Nook*